

State of Wyoming Corner Record

(In compliance with the CORNER PERPETUATION AND FILING ACT, Wyoming Statutes, 1997 Section 33-29-140 et. seq., and the Rules and Regulations of the Board of Professional Engineers and Professional Land Surveyors)

Reverse side of this form may be used if more space is needed.

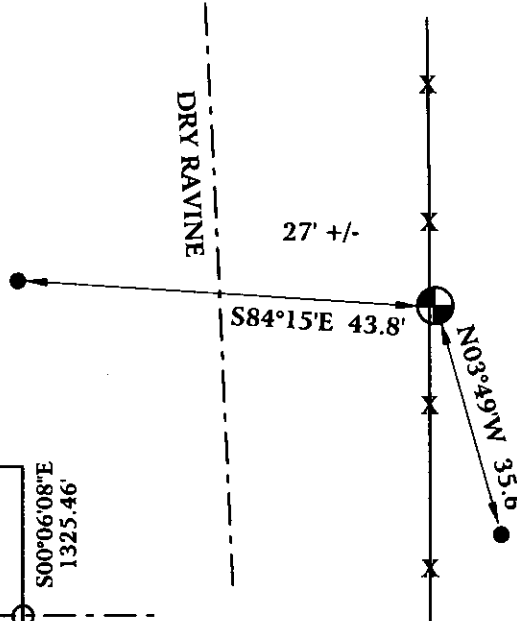
Record of original survey and citation of source of historical information (if corner is lost or obliterated). Description of corner monumentation evidence found and/or monument and accessories established to perpetuate the location of this corner. Sketch of relative location of monument, accessories, and reference points with course and distance to adjacent corner(s) (if determined in this survey). Method and rationale for reestablishment of lost or obliterated corner.

ORIGINAL CALL FOR 28" X 20" X 6" RED SANDSTONE MARKED ONE NOTCH ON EAST, FIVE NOTCHES ON WEST, AND CC ON SOUTH.

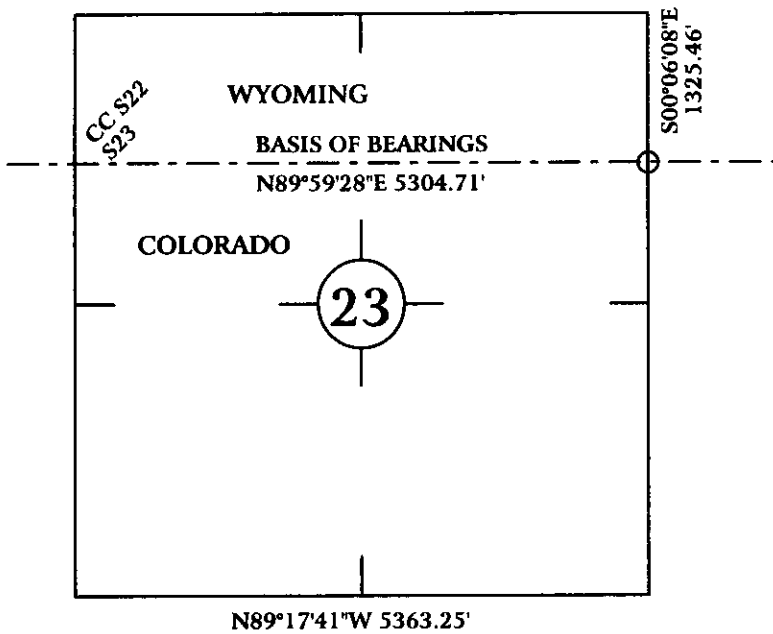
FOUND OLD NORTH-SOUTH FENCE LINE, MILE POST 59 TO EAST, AND MILE POST 61 TO WEST.

SET 3/4" X 30" REBAR WITH 3 1/4" ALUMINUM CAP. P.L.S. 6099 AT INTERSECTION OF OLD FENCE LINE AND STATE LINE, AND SET TIES AS SHOWN BELOW.

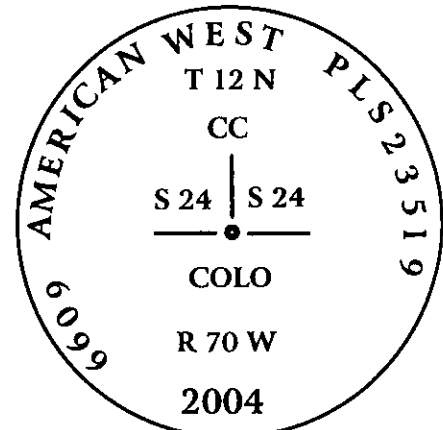
● = SET 5/8" X 24" REBAR WITH 1 1/2" ALUMINUM CAP. P.L.S. 6099.



Monument location



Monument Inscription



Date of Field Work: 10/26/04

Office Reference: AW04-8634

3 1/4" ALUMINUM CAP ON 3/4" X 30" REBAR

Cross Index Plat

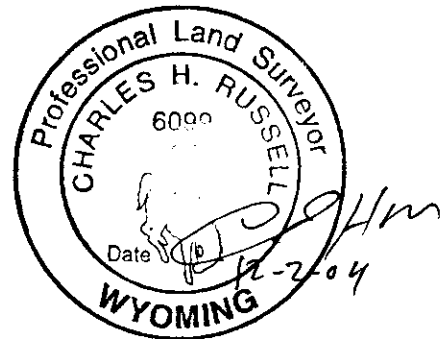
1	2	3	4	5	6	7	8	9	10	11	12	13	14	15	16	17	18	19	20	21	22	23	24	25	
A																									A
B																									B
C	6	5	4	3	2	1																			C
D																									D
E																									E
F																									F
G	7	8	9	10	11	12																			G
H																									H
I																									I
J																									J
K																									K
L	18	17	16	15	14	13																			L
M																									M
N																									N
O																									O
P	19	20	21	22	23	24																			P
Q																									Q
R																									R
S																									S
T	30	29	28	27	26	25																			T
U																									U
V																									V
W																									W
X	31	32	33	34	35	36																			X
Y																									Y
Z																									Z
1	2	3	4	5	6	7	8	9	10	11	12	13	14	15	16	17	18	19	20	21	22	23	24	25	

Firm/Agency, Address
 CHARLES H. RUSSELL P.L.S. 6099
 AMERICAN WEST LAND SURVEYING CO.
 29 SOUTH 4TH AVENUE
 BRIGHTON, CO 80601

Telephone Number:
 303-659-1532

This corner record was prepared by me or under my direction and supervision.

SEAL & SIGNATURE



RECORDED 2/17/2005 AT 1:52 PM REC# 409610 BK# 1865 PG# 150
 DEBRA K. LATHROP, CLERK OF LARAMIE COUNTY, WY PAGE 1 OF 1

Corner Name: Colo/Wyo Closing Corner, Sections 23 & 24, T 12 N, R 70 W, 6th P.M.

Cross-Index No.: O-21

County: Laramie Wyoming / Larimer Colorado